

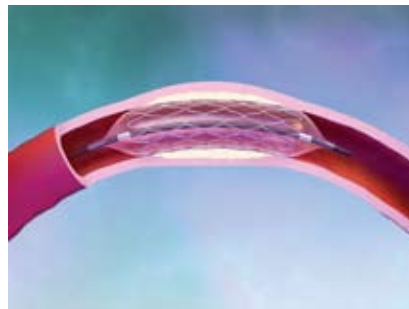
Illustrations



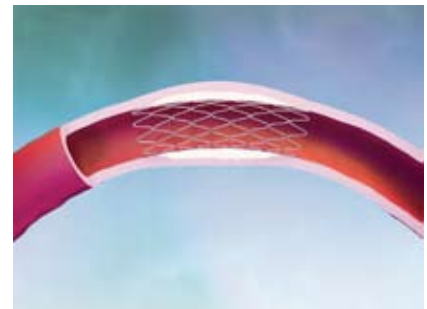
1 (a). *Healthy coronary artery.* A healthy coronary artery allows oxygenated blood to flow freely to the heart muscle.



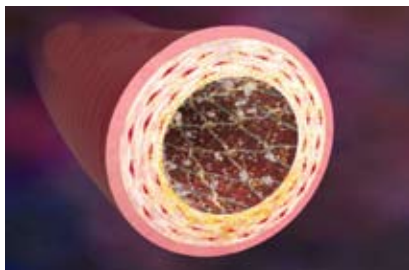
1 (b). *Unhealthy coronary artery.* In coronary artery disease, fatty deposits accumulate on the artery wall, restricting the flow of oxygenated blood to the heart. This can cause chest pain (angina) or heart attack (myocardial infarction).



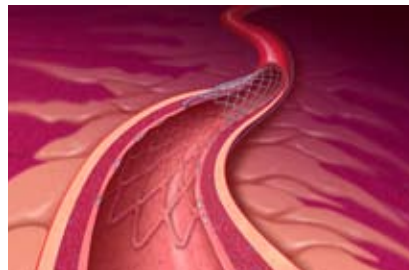
2 (a). *Stent placement.* A stent is a tiny wire mesh tube used to prop open a coronary artery after it has been cleared of a blockage in a minimally invasive procedure called balloon angioplasty. The balloon is inflated to compress the plaque against the wall of the artery and to expand the stent.



2 (b). *Stented artery.* After the balloon is deflated and removed, the stent remains in place to keep the artery open.

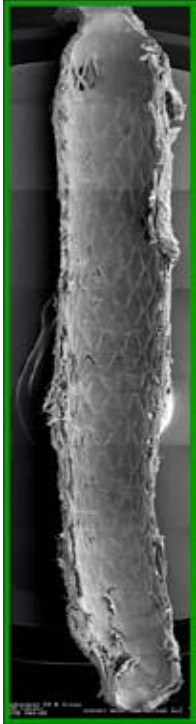


3. *Drug elution.* Drug-eluting stents are coated with medication (indicated with yellow dots) to reduce the chance of an artery becoming clogged again by slowing the growth of excessive tissue as the artery walls heal following angioplasty. The medication is released, or eluted, into the arterial wall over a period of a few weeks.



4. *Healthy healing.* Over time, new tissue forms over the stent in a process called endothelialization. This forms a biological shield between the stent and the bloodstream, helping reduce the chance of potentially dangerous blood clots forming around the stent.

Electron microscopy images



5 (a) Endeavor Stent



5 (b) Taxus Stent



5 (c) Cypher Stent

5 (a,b,c). *Healing response differences.* These three electron microscopy images of stented arteries show a difference in healing response between the three drug-eluting stents available in the United States. Twenty-one days after stent implantation, 75% of the (a) Endeavor stent struts are covered with new tissue, compared with approximately 50% for the (b) Taxus stent from Boston Scientific and 30% for the (c) Cypher stent from Johnson & Johnson. Foreign bodies exposed to the bloodstream increase the likelihood of the formation of dangerous blood clots.

Photographs



6. Crimped on delivery system. The Endeavor drug-eluting stent is crimped tightly around a wrapped balloon using a combination of heat and pressure. This tight wrap yields a low profile, improving deliverability of the stent through the artery.



7. Expanded on balloon. The Endeavor drug-eluting stent uses a proprietary manufacturing technique that provides for precise alignment of the stent on the balloon, thereby minimizing the balloon overhang extending beyond the ends of the stent and protecting healthy tissue during stent deployment.



8. Curved. The Endeavor stent is made from an advanced cobalt alloy, which results in thin struts for exceptional deliverability and unmatched flexibility. In addition, its unique modular design and custom laser fusion patterns allow greater conformability to the curvature of the vessel and less focal stress to the arterial wall.